

# Highlights - Ontario County FOLLOWPA Program

Betsy Landre, Ontario County Planning Department



# Notable Resources

## Lakes:

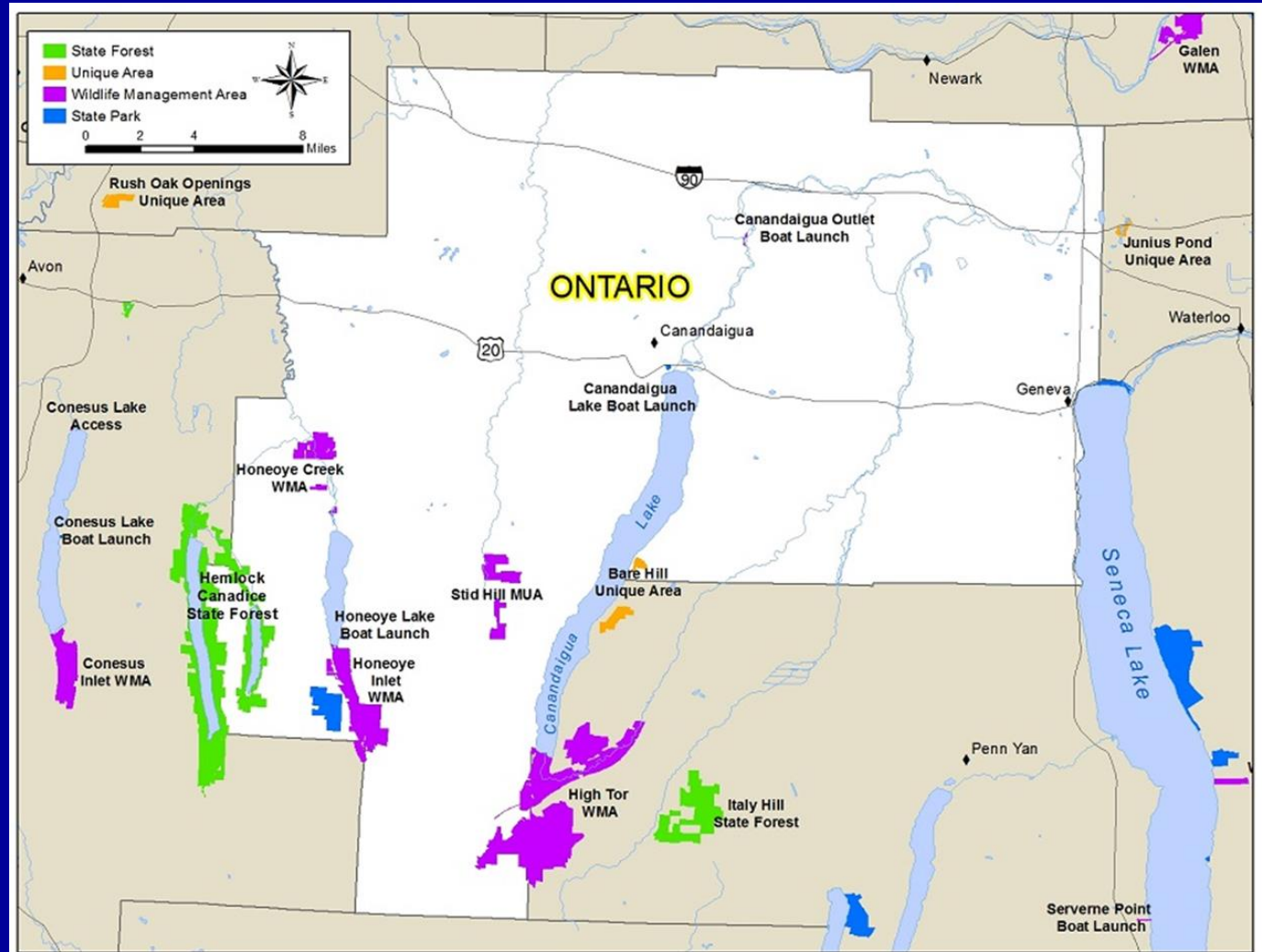
Seneca  
Canandaigua  
Honeoye  
Canadice  
Hemlock

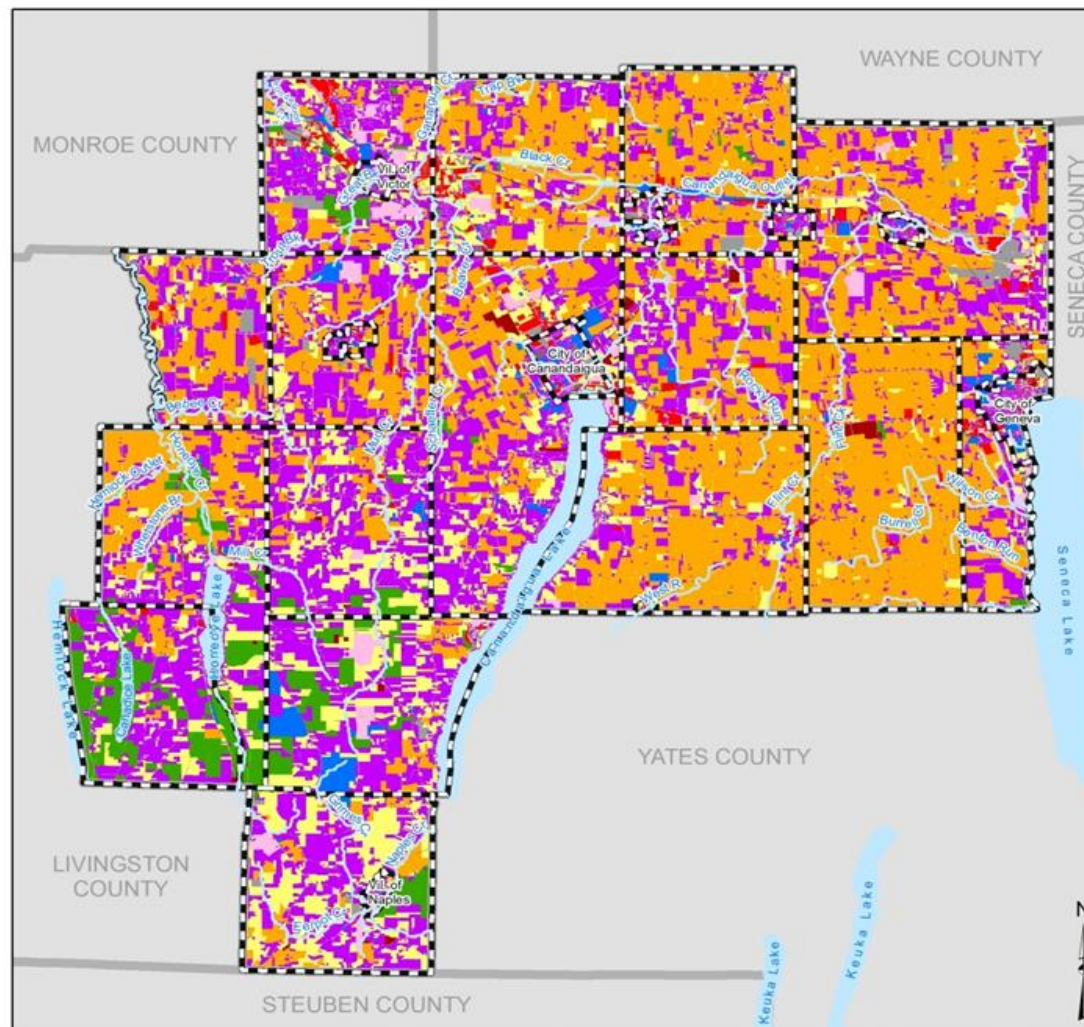
## Wetlands:

High Tor WMA  
Honeoye Lake Inlet WMA  
Honeoye Creek WMA

## Creeks:

Grimes, Naples, Flint,  
Mud, Irondequoit





## Regional Water Quality and Land Use

- Agriculture
- Residential
- Vacant Land
- Commercial
- Recreation and Entertainment
- Community Services
- Industrial
- Public Services
- Wild Forested, Conservation Lands and Public Parks



39.2%	Agriculture
33.7%	Residential
15.2%	Vacant Land
1.9%	Commercial
1.6%	Recreation and Entertainment
2.0%	Community Services
1.2%	Industrial
0.7%	Public Services
4.5%	Wild Forested, Conservation Lands and Public Parks

Map prepared in October 2016 by the Ontario County GIS Program

### IMPORTANT NOTICE AND DISCLAIMER:

THIS MAP AND INFORMATION IS PROVIDED "AS IS" AND ONTARIO COUNTY MAKES NO WARRANTIES OR GUARANTEES, EXPRESSED OR IMPLIED, INCLUDING WARRANTIES OF TITLE, NON-INFRINGEMENT, MERCHANTABILITY AND THAT OF FITNESS FOR A PARTICULAR PURPOSE CONCERNING THIS MAP AND THE INFORMATION CONTAINED HEREIN. USER ASSUMES ALL RISKS AND RESPONSIBILITY FOR DETERMINING WHETHER THIS MAP IS SUFFICIENT FOR PURPOSES INTENDED.

# Identifying FLOWPA Projects

## Lakes, Land, People, Plans

### ■ Goals

- Protect, Manage, Mitigate
- Watershed Focus
- Leverage Partnerships

### ■ Whose Got Capacity?

- Know-How/Time
- Cost-Share
- Shovel Ready/Action Plan
- Agreements


### ■ Needs based on

- Watershed Plans
- Watershed Monitoring
- Environmental Events
- Research
- Availability or Gaps in Funding

### ■ Equity/Parity

- Across watersheds, communities, partners





## Honeoye Lake Aquatic Vegetation Management Program (AVMP)

### Honeoye Lake:

- ✓ 303(d) listed for phosphorus, low DO
- ✓ "Impaired" AA waterbody for nutrients, algae and weeds
- ✓ 1987 Community Survey: Nuisance Weeds #1 Problem (81%)
- ✓ 2010 Survey: Continue the Program (67%)

# Partners and Plans → Coordinated Action

- Honeoye Lake Watershed Task Force
- Honeoye Valley Assoc.
- Towns of Richmond and Canadice
- FLCC - Muller Field Station
- The Nature Conservancy
- Ontario County SWCD
- Ontario County Planning
- FLOWPA
- DEC
- Private Consultants
- Honeoye Lake Watershed Management Plan, 2007
- Honeoye Lake Macrophyte Management Plan, 2008
- Many studies

# Recommended: Aquatic Vegetation Harvesting

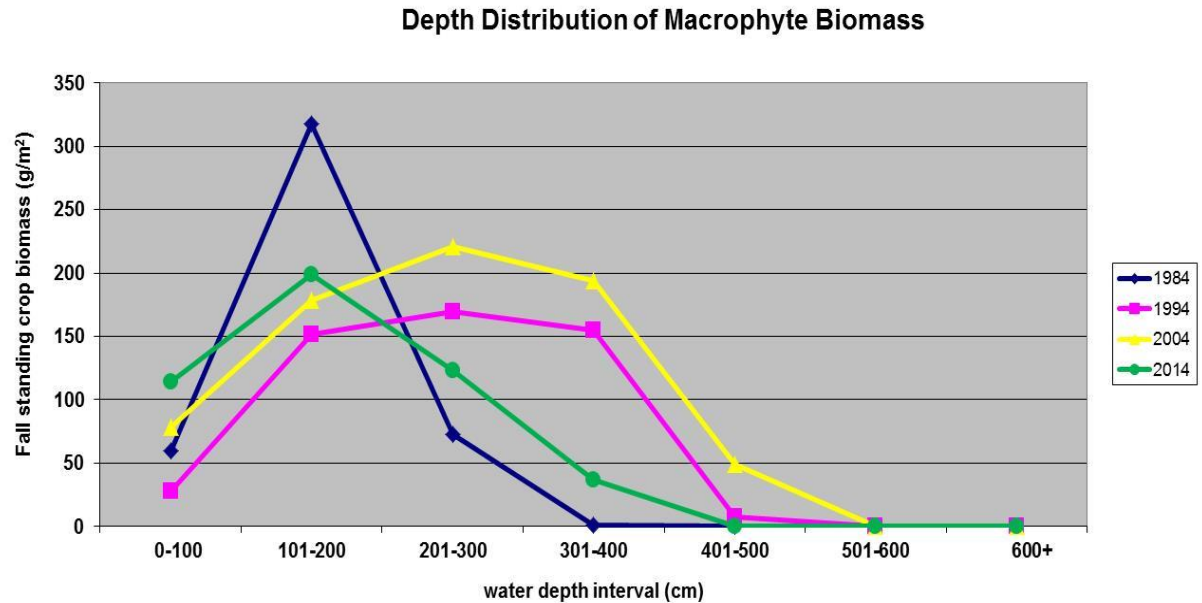
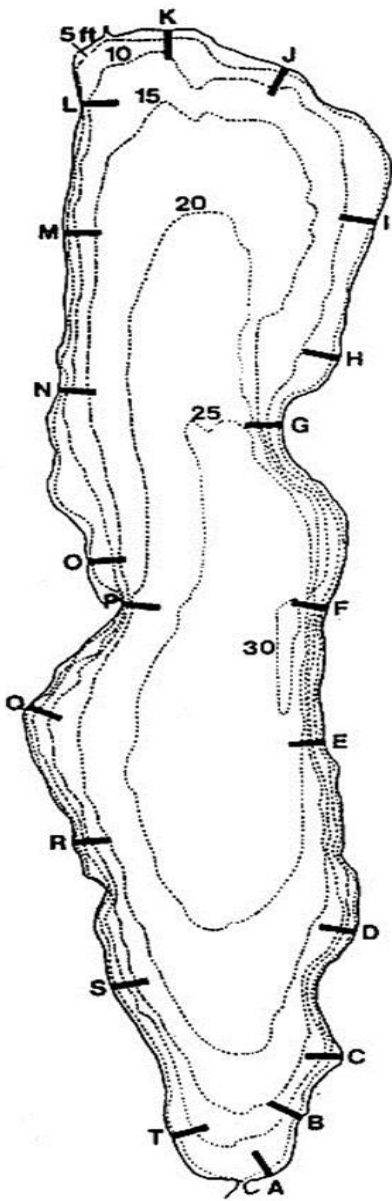


- Opens up areas for boating and swimming
- Removes phosphorus
- Enhances sport fishery



# Measuring Impact: Depth Distribution of Macrophytes 1984-2014

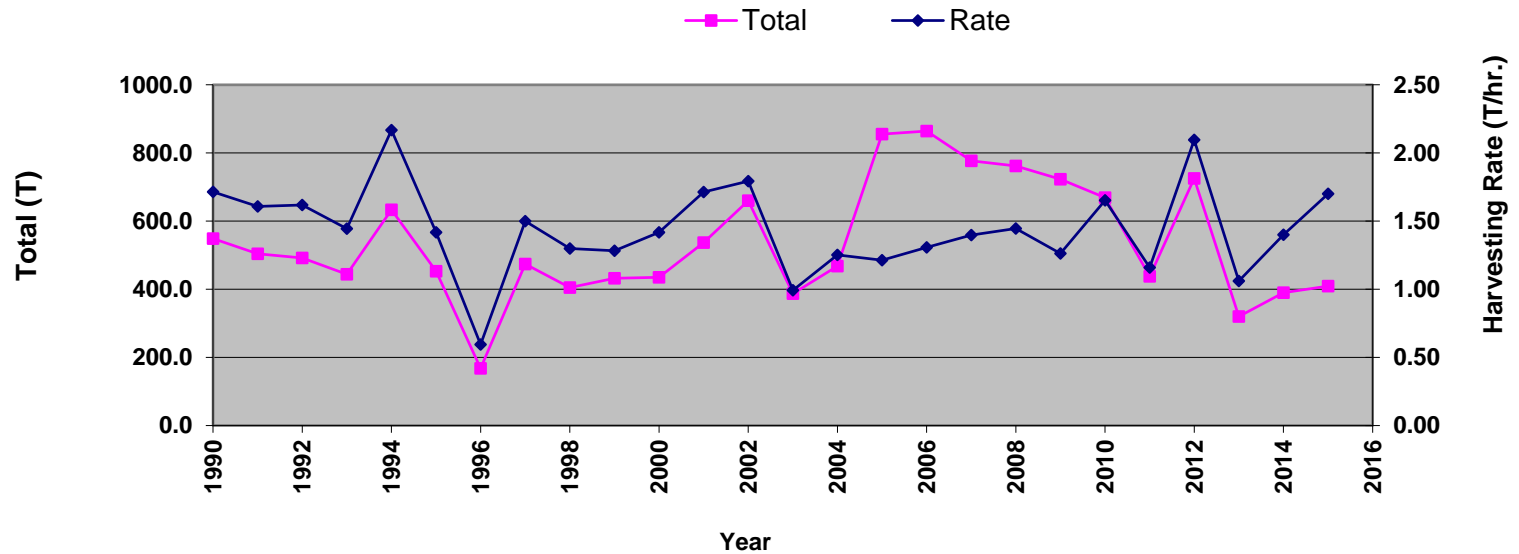
(B. Gilman et al, 2015)





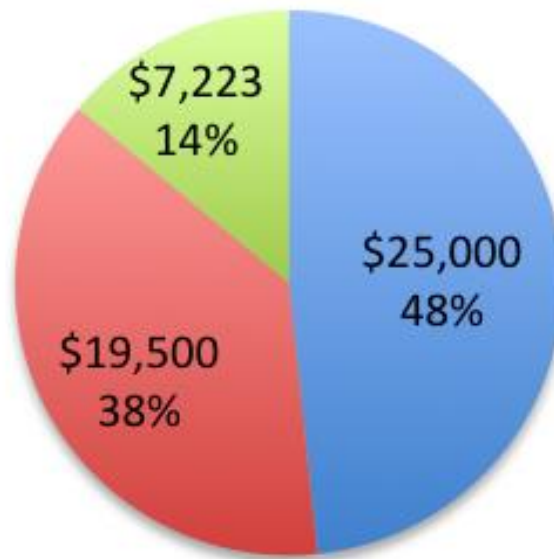
# Harvesting History & Performance

Total Wet Tons Removed and Harvesting Rate  
2 Harvesters Operating 2005-2011  
1 New Larger Harvester Operating since 2012



## 2015 Harvesting Operations Cost-Share

■ State ■ County ■ Towns



# Chautauqua Lake



# Fragment Management

**long docks, restricted shoreline**



**23'x8' work barge & crew**





# Resident Bids Farewell

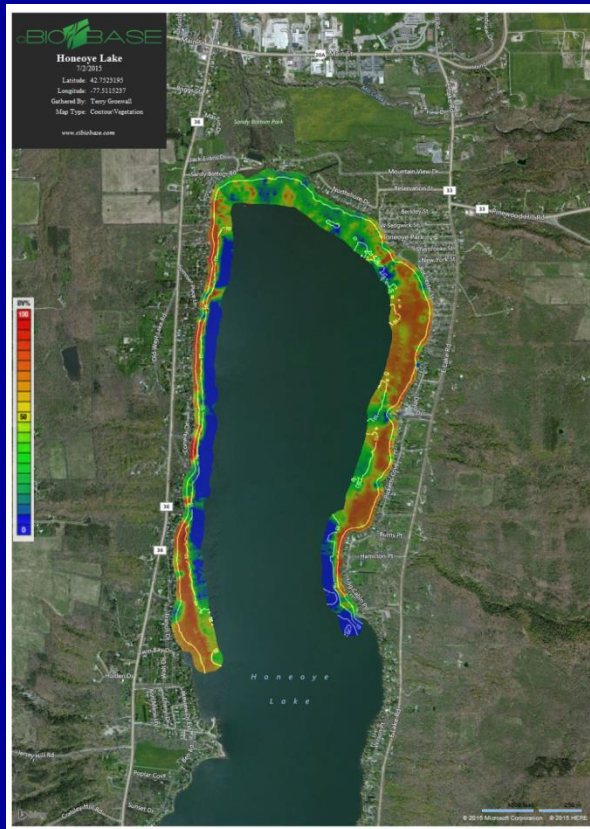


**Off Loading**

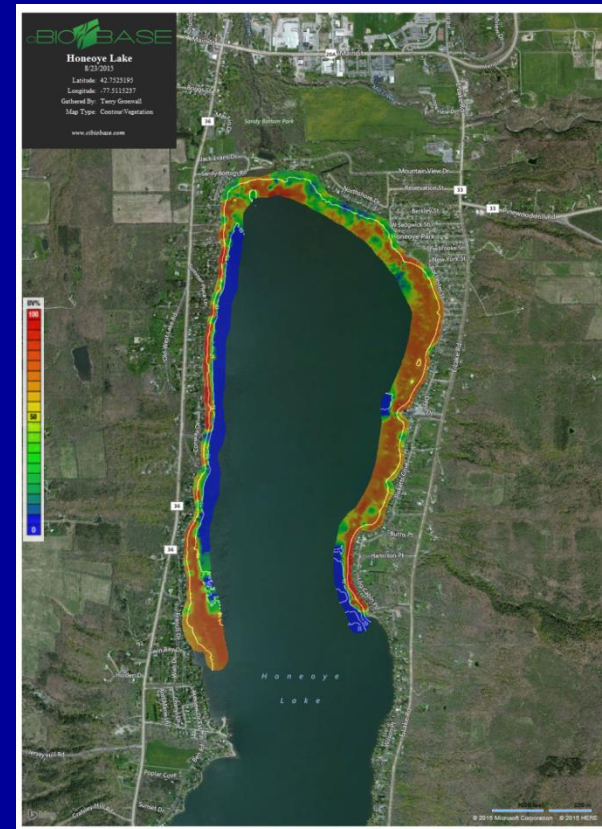


# Targeted harvesting

July 3, 2015



August 23, 2015





# GPS harvest boundary @ wetland



# Challenges (Old and New): HABs





# “Quieter” paddlewheels near shore



# Investigating water quality dynamics

Dates 9/16 - 9/19/2015					
Francis Tract - two locations					
	5'			8'	
(N 42 45.578 & W 77 31.100)				(N 42 45.586 & W 77 31.081)	
	Secchi			Secchi	
BEFORE	1.25 M			1.25 M	
AFTER	1.25 M			1.25 M	
1 HR	1.25 M			1.25 M	
8 HRS	1.1 M			1.1 M	
24 HRS	1.25 M			1.35 M	
48 HRS	1.60 M			1.60 M	
72 HRS	1.50 M			1.40 M	

# Volunteers at work ...





# Watershed Services: 2015 Pilot Yard Waste Composting Project

**100 vehicle visits**

**85.5 cubic yards  
(estimated)**





# Yard Waste Collection

Fall 2016

Help keep yard waste out of ditches, streams, and the lake.  
Yard waste in Honeoye Lake feeds weeds and algae.

**Bring your yard waste to:**  
**Richmond Municipal Brush Pit**  
**(4947 East Lake Rd)**

Open every day from dawn to dusk until the end of November

*Available to all residents of the Honeoye Lake Watershed Community*

All yard waste must be  
disposed of loosely. Please  
remove your yard waste  
material from bags including  
paper bags.

Tubby cannot grind bags!

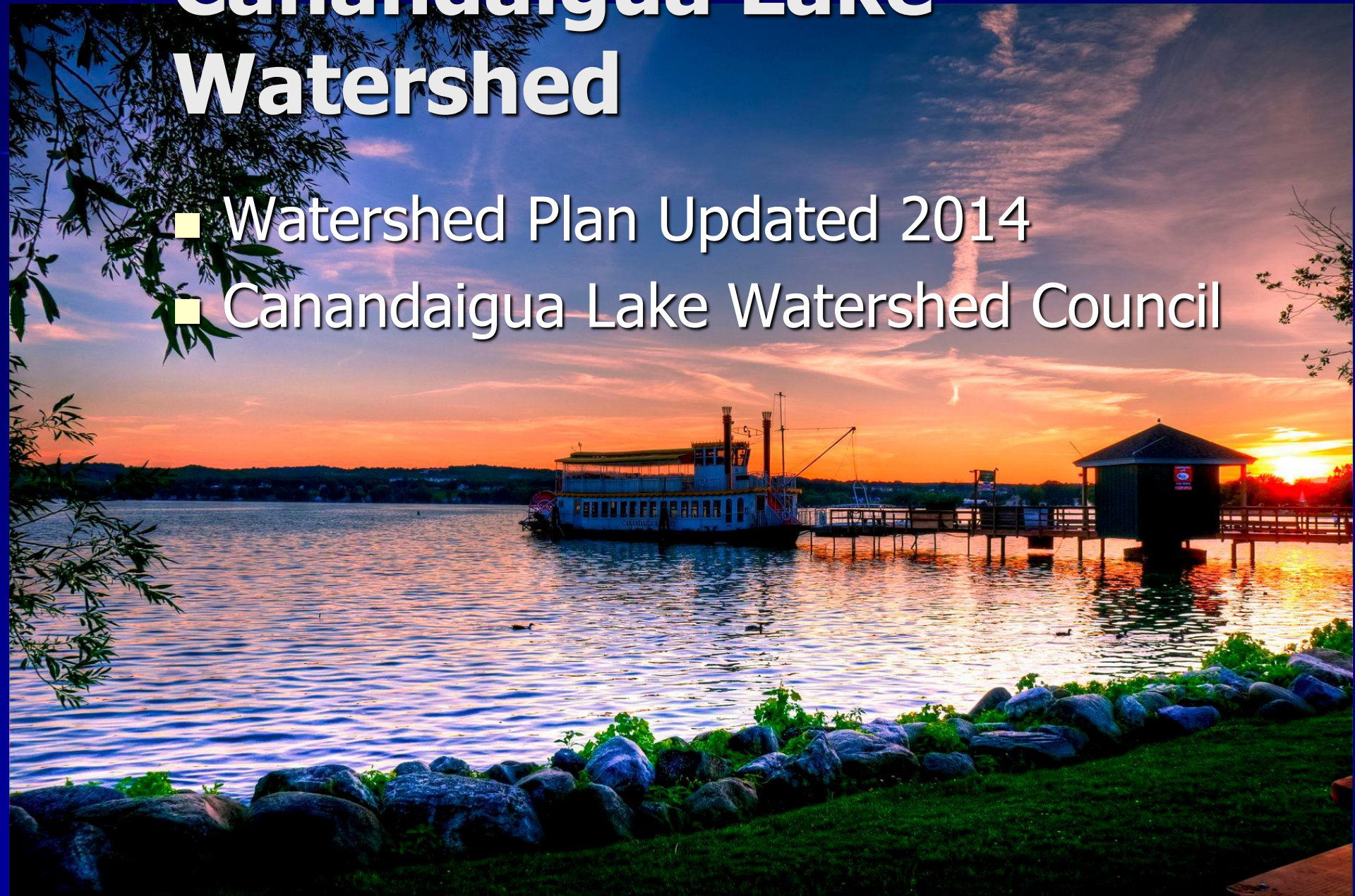


Yard waste includes leaves, grass  
clippings, garden debris, tree  
branches, limbs and similar materials  
such as aquatic weeds, per NYS  
Conservation Law Part 360-1.2(b)



# Canandaigua Lake Watershed

- Watershed Plan Updated 2014
- Canandaigua Lake Watershed Council





# WQ Monitoring: In-Lake & Tributaries

## CLWC and FLCC

- Monthly Sampling April – November
- 2 mid-lake; 6 near-shore
  - Secchi, Chlorophyll *a*, TP, DO, Temp, Conductivity, % O<sub>2</sub>, Nitrates, TSS
- Storm Event Inspection
- Invasive Species Inspection
- Quagga Mussel Inventory
- Algae using Fluoroprobe



# Site Specific Implementation Projects

OCSWCD, Towns & Highway Depts., OC Public Works





# Green Infrastructure

## OC SWCD with Town of Victor





# Green Infrastructure

Ontario County SWCD, FLCC, CMAC



# What is this spongy surface?



***This Area Paved With Porous Pavement***

RAINFALL RAINFALL RAINFALL

Allows Infiltration  
Reduces Runoff

Filters Pollutants  
Reduces Soil Erosion

**KBI Flexi-Pave**  
**Porous Paving Made with Recycled Car Tires**  
**1,280 Tires Used For This Project**

**Porosity Rate :**  
**2000 Gallons Per Hour Per Square Foot**  
**The Entire Volume Of Canandaigua Lake**  
**Could Be Drained Through this Pad in 6.3 Years.**

FingerLakes  
EPS  
Finger Lakes  
SUSTAINABLE  
VALUES AT  
WORK  
Ontario County  
Ontario County Soil and Water  
Conservation District



# Erosion Control/Drainage

OC SWCD, Town of Seneca, Flint Creek Watershed



- 200+ acres outlets at NYS Rte. 245 culvert
- Drainage ditch in poor condition
- Private residence threatened
- Aquatic life in Flint Creek "stressed"

