

# Tompkins County FLLOWPA Program

Jon Negley – District  
Manager  
October 28<sup>th</sup>, 2016

# USGS Gauging Station Support

USGS 04233286 SIXMILE CREEK AT BROOKTONDALE NY

PROVISIONAL DATA SUBJECT TO REVISION

Available data for this site: Time-series: Current/Historical Observations • GO

Click to hide station-specific text

Funding for this site is provided by:



Town of Caroline



Cooperative Water Program

**LOCATION.**--Lat 42°22'53", long 76°23'40" referenced to North American Datum of 1983, Tompkins County, NY, Hydrologic Unit 04140201, on left bank 1,000 ft upstream from bridge on Valley Road in Brooktondale and 6.5 mi southeast of Ithaca.

**DRAINAGE AREA.**--27.0 mi<sup>2</sup>.

**PERIOD OF RECORD.**--November 2002 to current year.

**REVISED RECORDS.**--WDR-US-2012: 2011(m).

**GAGE.**--Water-stage recorder. Elevation of gage is 900 ft above NGVD of 1929, from topographic map.

**REMARKS.**--Water Years 2014-15: Records fair except those for estimated daily discharges, which are poor.

**EXTREMES FOR PERIOD OF RECORD.**--Maximum discharge, 4,470 ft<sup>3</sup>/s, Sept. 8, 2011, gage height, 5.38 ft, from rating curve extended above 1,500 ft<sup>3</sup>/s on basis of slope-area measurement at gage height 4.16 ft; minimum discharge, 2.8 ft<sup>3</sup>/s, part of each day Aug. 25-27, Sept. 1-3, 13, 14, 2012, gage height, 0.36 ft.

**PERIOD OF DAILY RECORD<sup>1</sup>.**--SUSPENDED-SEDIMENT CONCENTRATION: Water years 2003 to current year.

SUSPENDED-SEDIMENT DISCHARGE: Water years 2003 to current year.

**INSTRUMENTATION<sup>1</sup>.**--Automatic water sampler since February 2003.

**COOPERATION<sup>1</sup>.**--Periodic water-quality samples were collected by personnel from the City of Ithaca Department of Public Works (Water and Sewer Division) and Tompkins County Soil and Water Conservation District. Samples were analyzed by personnel from the City of Ithaca Department of Public Works (Water and Sewer Division).

**EXTREMES FOR PERIOD OF RECORD<sup>1</sup>.**--SUSPENDED-SEDIMENT CONCENTRATION: Maximum daily mean, 5,230 mg/L, May 16, 2014; minimum daily mean, less than or equal to 1 mg/L on many days in 2003-15.

SUSPENDED-SEDIMENT DISCHARGE: Maximum daily, 15,200 tons, June 27, 2006; minimum daily, 0.01 tons on many days in 2005-12, Oct. 1, 2013, Nov. 2-5, 2014.

<sup>1</sup> Water-Quality Records

[Peak Flow and Stage Information](#)

This station managed by the NY Water Science Center, Ithaca.



\$5,600 yearly contract to Town of Caroline

–Matched by City of Ithaca, USGS and Town of Caroline for ~\$15,000 total cost



# Ag BMP Implementation

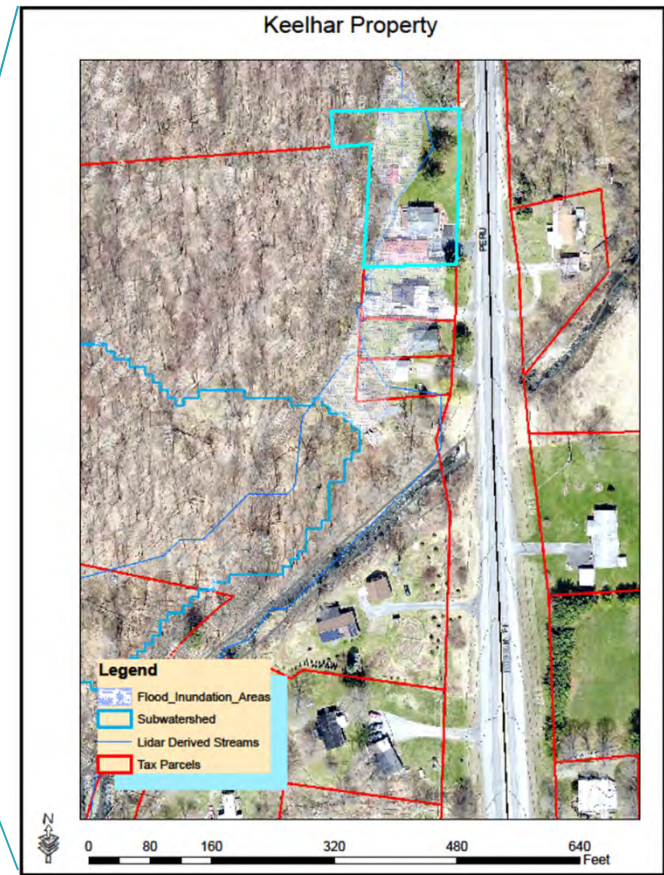
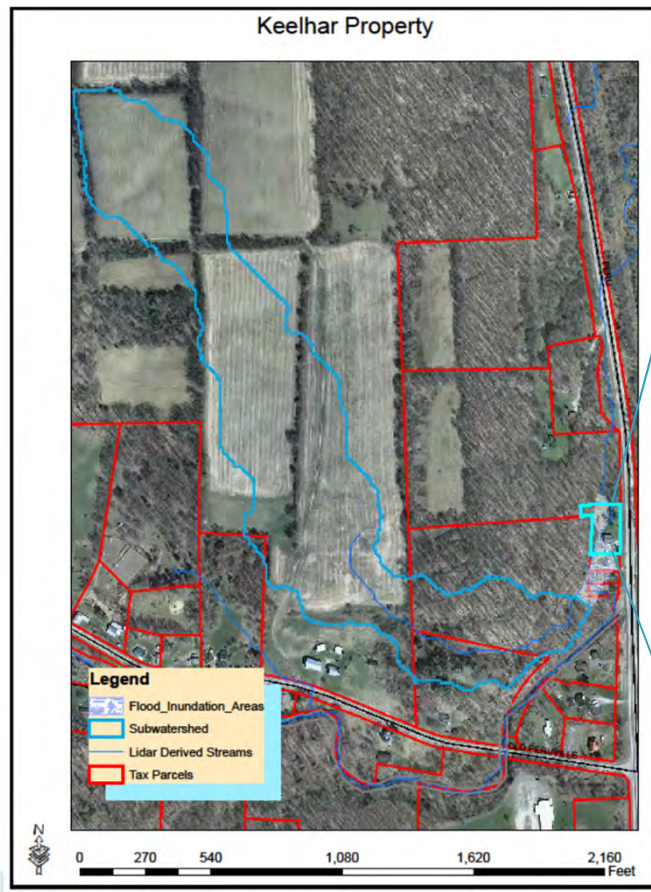
- ▶ Snowtop Dairy laneway roof cover



\$10,000 total cost  
Matched with \$1,000 of owner funds for  
engineering

# Non-Ag Water Quality Improvement Program

## ► Owasco Watershed Stream Realignment Project





# Non-Ag Water Quality Improvement Program



Total cost of \$5,000  
with match of \$500 for construction and  
\$500 for engineering from landowner



# Non-Ag Water Quality Improvement Program

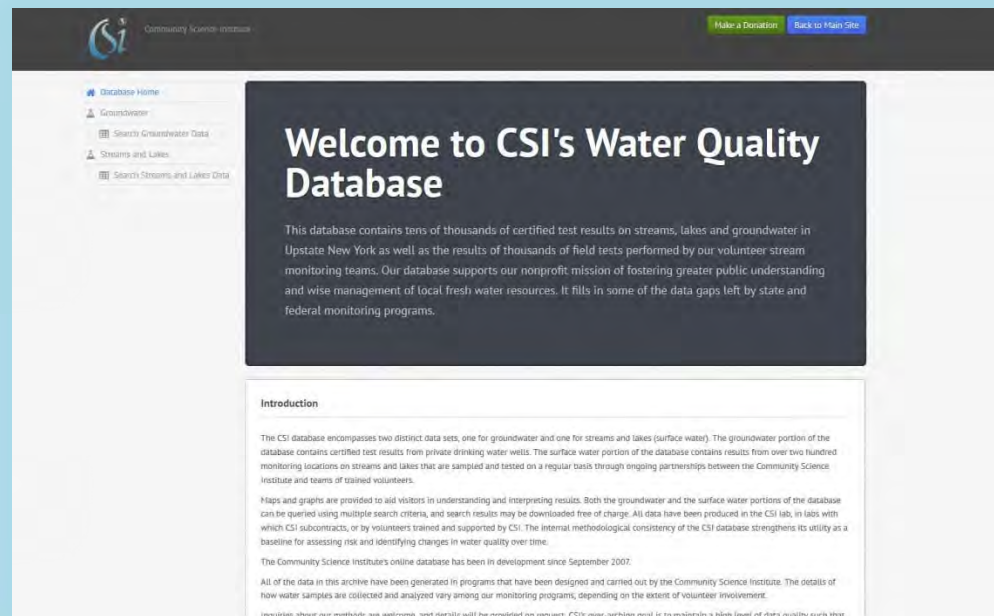


\$15,000 total cost  
Town of Caroline expanded project  
upstream and downstream at a total cost of  
~ \$45,000

# Baseline Water Quality Monitoring

- ▶ Community Science Institute
- ▶ Data used for Cayuga Lake TMDL model development

\$7,000 yearly  
contract  
–Matched by  
Tompkins County  
and other municipal  
governments at  
~\$90,000





# Technical Assistance

- ▶ \$25,000–\$30,000 to support part 35% of staff salary





# Hydrilla Eradication Program



~\$300,000 annual budget to cover Hydrilla monitoring and Herbicide applications

–Matched by \$50,000 annually from NYS Parks, and \$40,000 of in-kind support from City of Ithaca, Cornell Cooperative Extension and other local government support.

# Cover Crops

- 150 acres seeded in 2016
- \$5,000- 10,000 will be appropriated yearly





# Compost Filter Sock Program



- Original grant funded through WQIP (\$128,000)

- Cost of filling sock (~\$3.50/foot)





# Compost Filter Sock Program





# Compost Filter Sock Program

