

# *Water Withdrawals -*

# *Another Piece to the Puzzle*

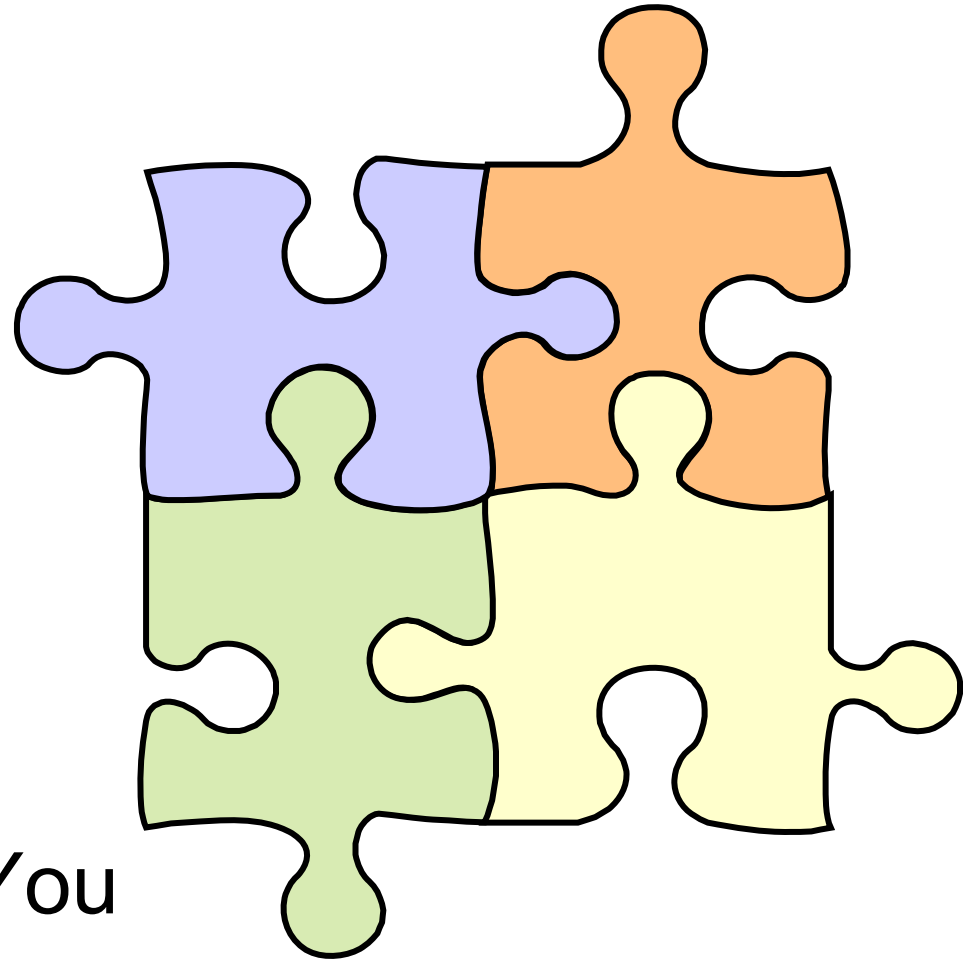
Don Zelazny  
Great Lakes Programs Coordinator  
NYSDEC



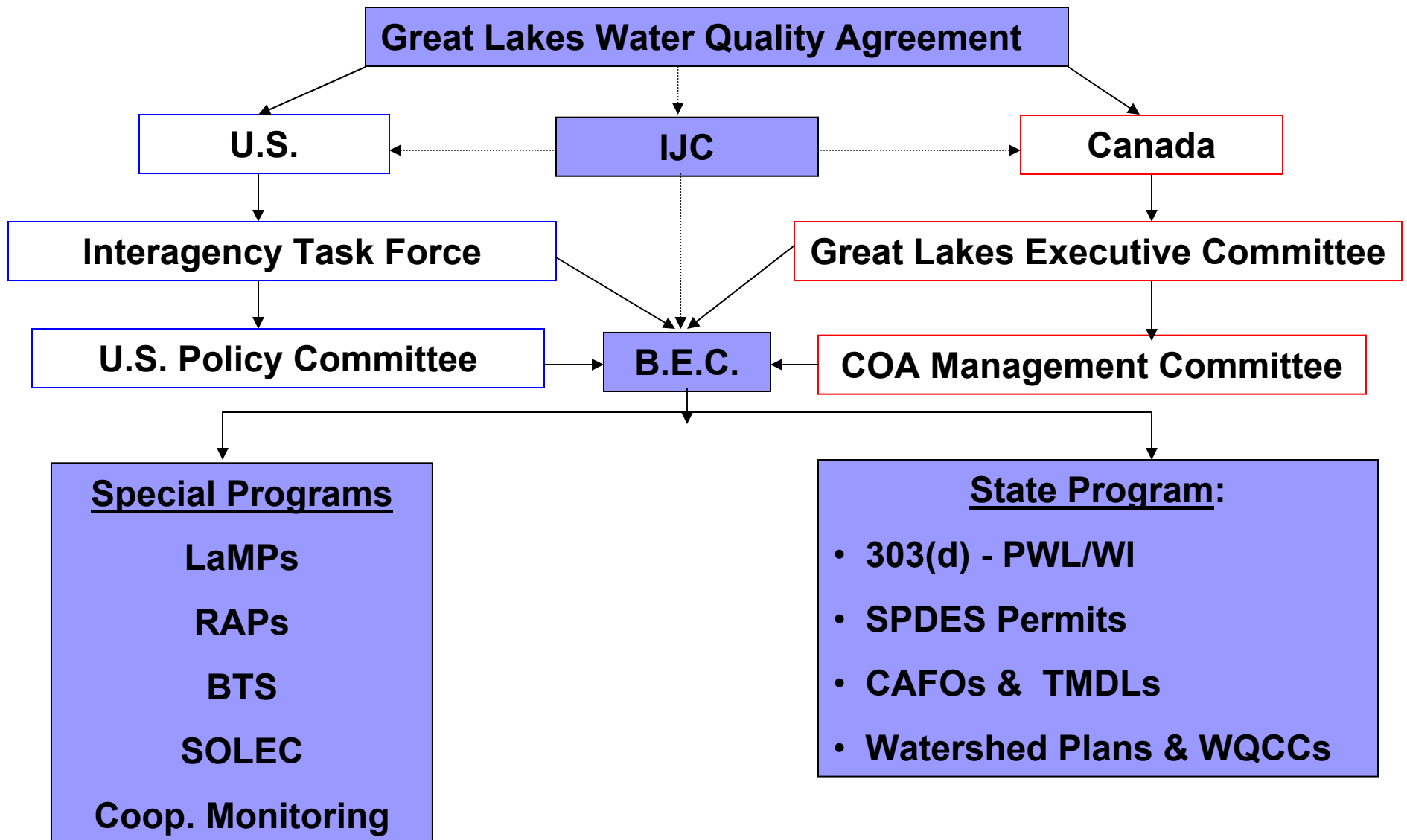
# Overview

---

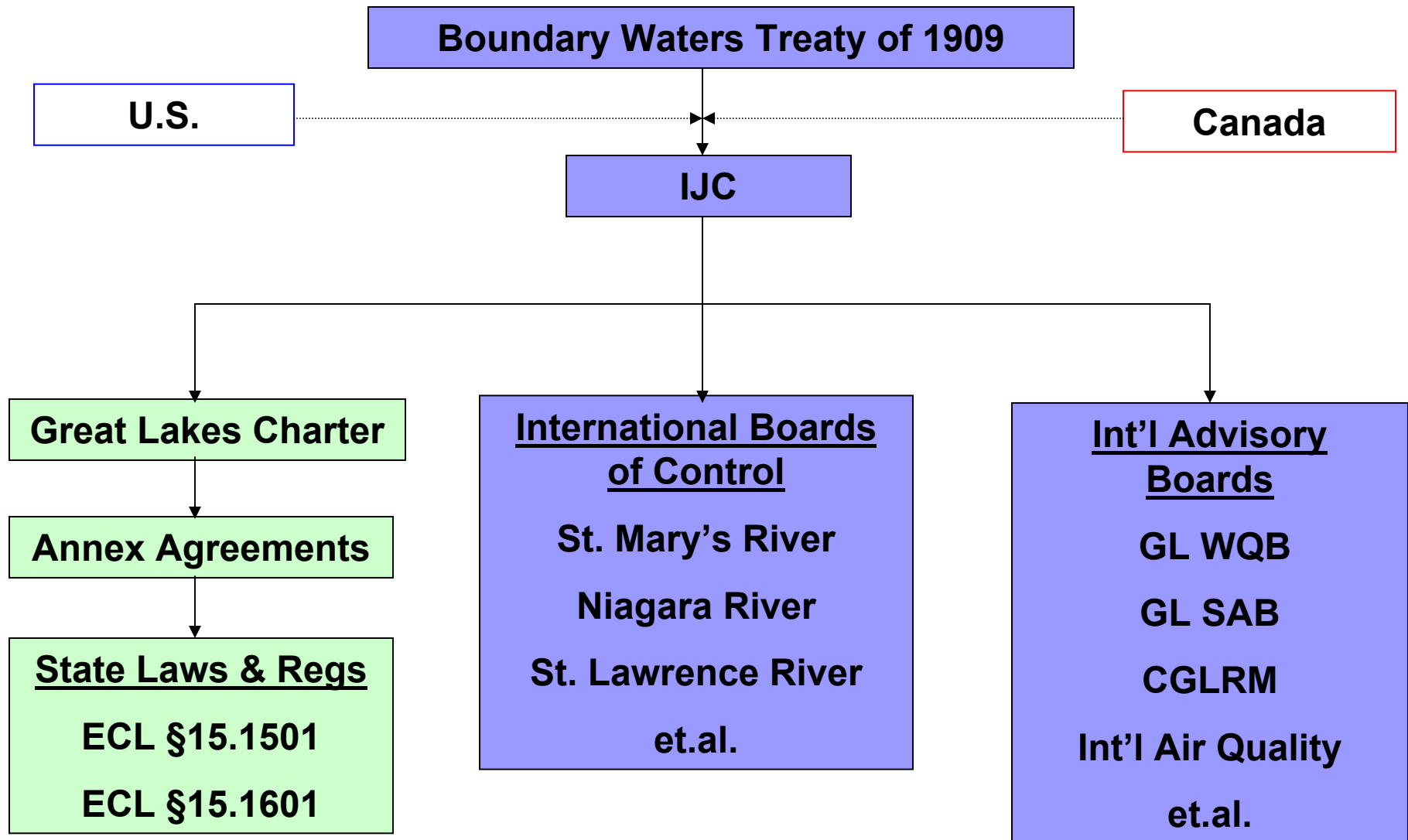
- The Puzzle
- The Compact
- What it Means for You



# *As if water quality isn't confusing...*



# Water Quantity & Supply





# *The Compact*

---

- WHEN - Effective December 8, 2008
- WHY - Implements “the Agreement” between States and Provinces
- WHO - Affects anyone proposing a new or increased water withdrawal, diversion and consumptive use
- HOW - Requirements phase in over next 5 years

# ... and WHERE





# *Key Provisions*

---

- **Bans all diversions w/ limited exceptions**
- **Establishes new responsibilities for Regional Body & Compact Council**
- **Requires management of in-basin water uses**
- **Establishes decision-making standard & process**
- **Mandates water conservation practices for all users**
- **Regional water withdrawal information and reporting system**
- **Enforcement provisions**
- **Ensures Tribal & Public involvement**
- **Commitment to better science**



# *So What ??*

---

**Diversions  
(include  
Bulk  
Exports)**

**Prohibited with exemptions:**

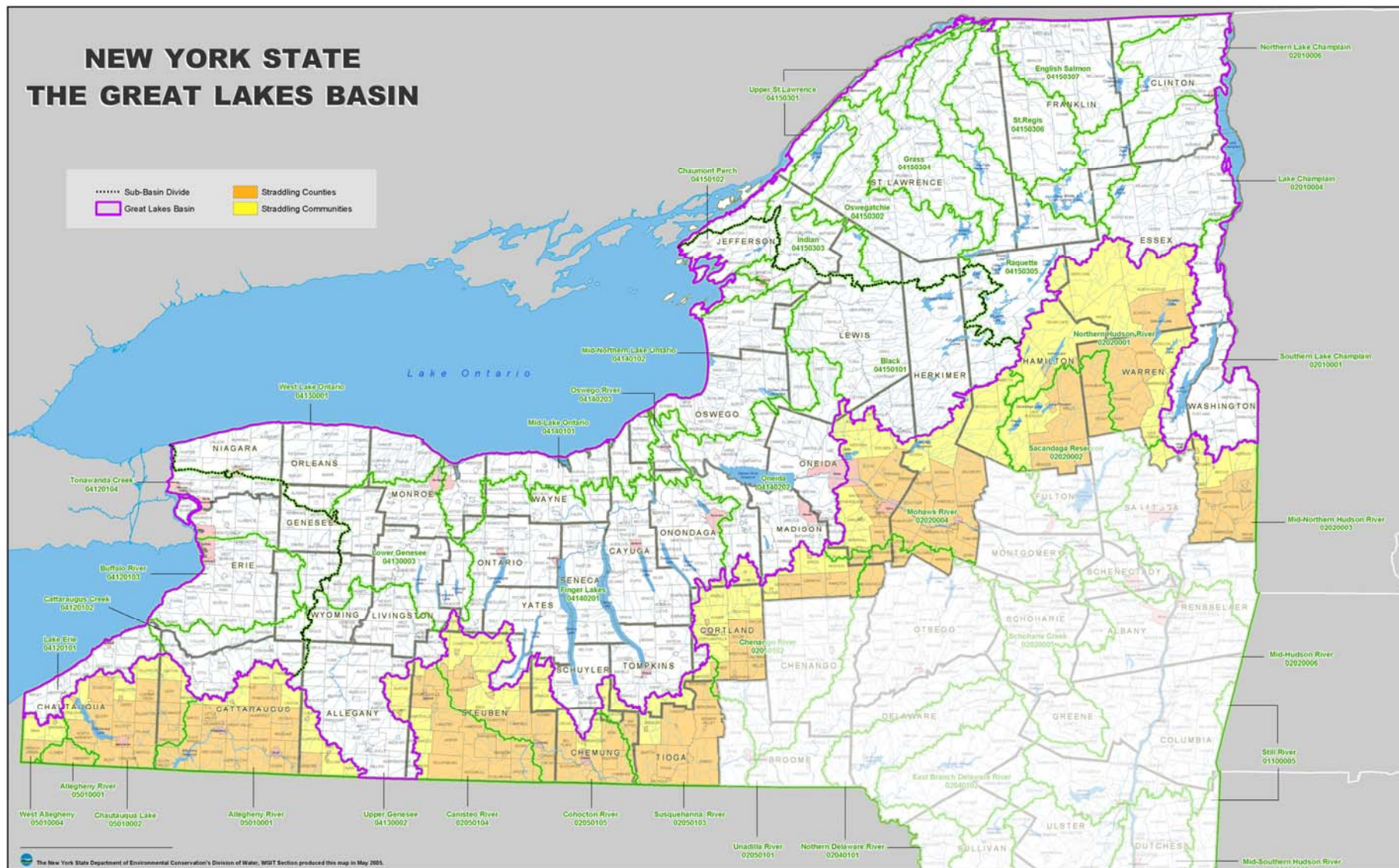
**Ballast, short-term fire fighting, emergency humanitarian needs**

**Prohibited with exceptions:**

- **Straddling communities** (existing corporate boundary of cities, towns straddling basin)
- **Straddling counties**
- **Intra-Basin transfers**
- **Subject to common standard**



# Exceptions



# So What ??

## In-Basin Uses

- **Management and regulation by States and Provinces based on common standard for new or increased withdrawals and consumptive uses**

*- - default to 100,000+ gpd (90-day avg.) if no rules established w/ in 10 years*

- **Prior Notice and Comment 5+mgd new or increased consumptive use**

- **Surface and Groundwater withdrawals**



# *So What ??*

---

## **Decision-Making Standard**

- **A reasonable use**
- **Apply water conservation & efficient use methods**
- **No adverse individual or cumulative impacts**
- **All unused water returned to source watershed**
- **Compliance with all other laws, regs, etc.**



# *So What ??*

---

<b>Conservation and Efficiency</b>	<p><b>Proposals for new or increased withdrawals –</b> conservation and efficiency measures; conservation and efficient use of existing water supplies</p> <p><b>State Programs –</b> commitments to conservation, efficiency, restoration, ecosystem integrity; develop program within 2 years of agreements (best management practices, performance standards, monitoring, research etc.); subject to annual reporting, regional review</p>
--	---

# *Looking Ahead ...*

---



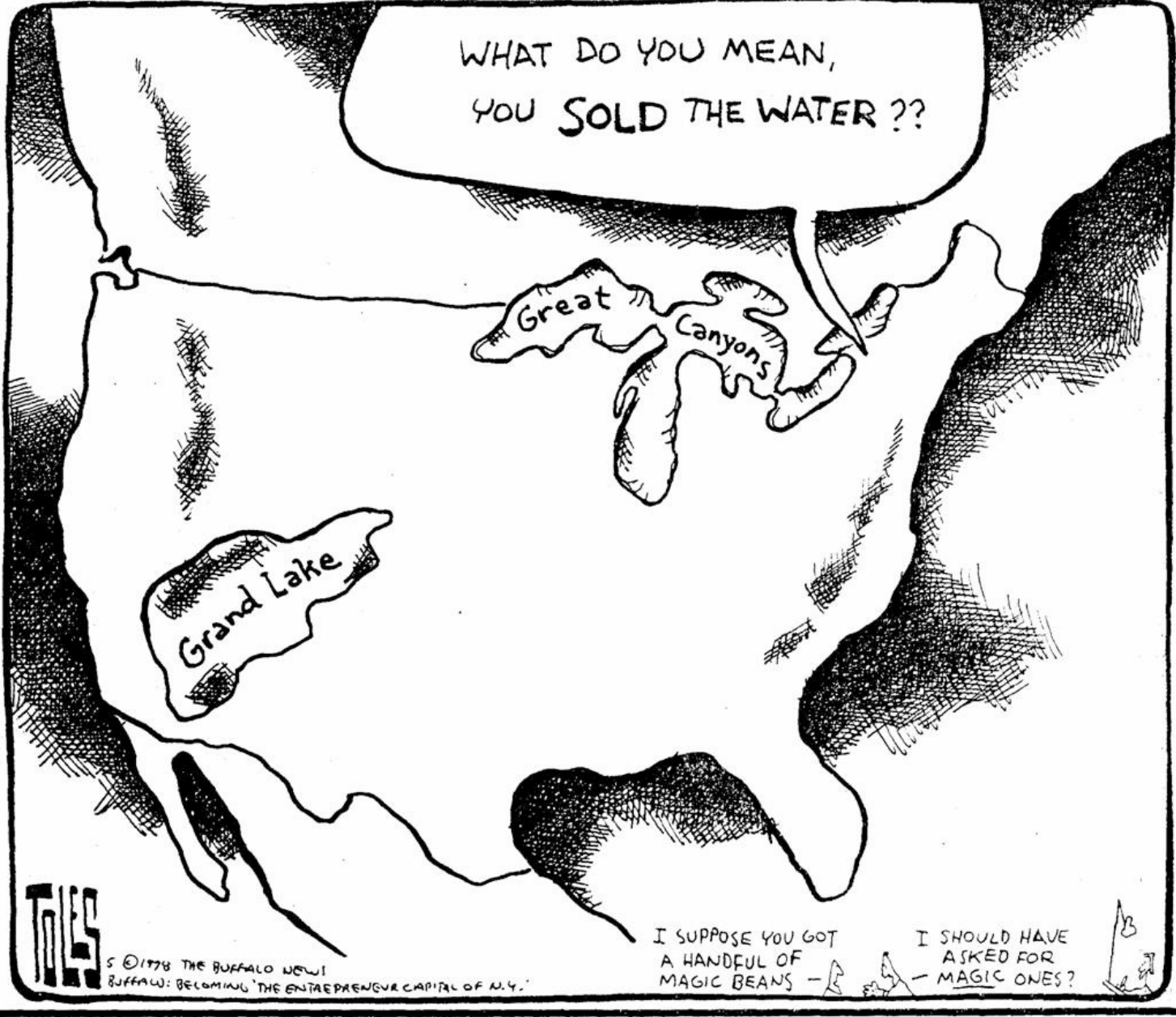
- **How can we conserve water?**
- **How can Science evaluate cumulative impacts and groundwater boundaries?**
- **How will consumptive uses be measured?**
- **How will climate change affect commitments?**

# *Looking Ahead ...*

---



- **Need for strategic sub-watershed planning?**
- **Water budgets and flow requirements??**
- **Beyond registration???**



WHAT DO YOU MEAN,  
YOU SOLD THE WATER ??

Great  
Canyons

Grand Lake

I SUPPOSE YOU GOT  
A HANDFUL OF  
MAGIC BEANS -

I SHOULD HAVE  
ASKED FOR  
MAGIC ONES?

T.S.

© 1998 THE BUFFALO NEWS  
BUFFALO: BECOMING THE ENTREPRENEUR CAPITAL OF N.Y.